



SOUTH BEACH

THE RESIDENCES



“the W South Beach
is a lesson in the
unadulterated luxe of
the Miami lifestyle”

-Wallpaper, July 2009

“a contemporary oasis
on a bustling strip”

-Travel + Leisure, October 2009



Photo: Nikolas Koenig

Exquisitely finished and furnished condominium residences in the heart of South Beach offering W Hotel's exceptional Whatever/Whenever[®] signature service

THE VISIONARIES



“Developers David Edelstein and Aby Rosen have opened... a \$400 million showplace that features the most alluring combination of design, cuisine and scene South Beach has yet experienced.”

-Ocean Drive, July 2009

“a team of
aesthetic stars”

-Departures, September 2009

THE COLLABORATORS

COSTAS KONDYLLIS
Architecture

ANNA BUSTA/STUDIO B DESIGN
Public Spaces Interior Design

PAULA HAYES
Conceptual Landscape Artist

GEORGE YABU & GLEN PUSHELBERG
Guest Room Interior Design

MICHAEL & EVA CHOW
Restaurateurs

DANNY CLINCH
Photographer

“It’s chic, sophisticated,
buzzing, beachfront, and,
perhaps most importantly,
culturally relevant.”

--Haute Living, December 2009/January 2010



THE RESIDENCES

“super chic
interior”

-Vogue UK

“First-rate art”

- *T Magazine, The New York Times,*
Travel, Winter 2009

Welcome Desk

Photo: Nicolas Koenig / Art: Andy Warhol, Camouflage, Acrylic and silkscreen ink on canvas / 1986

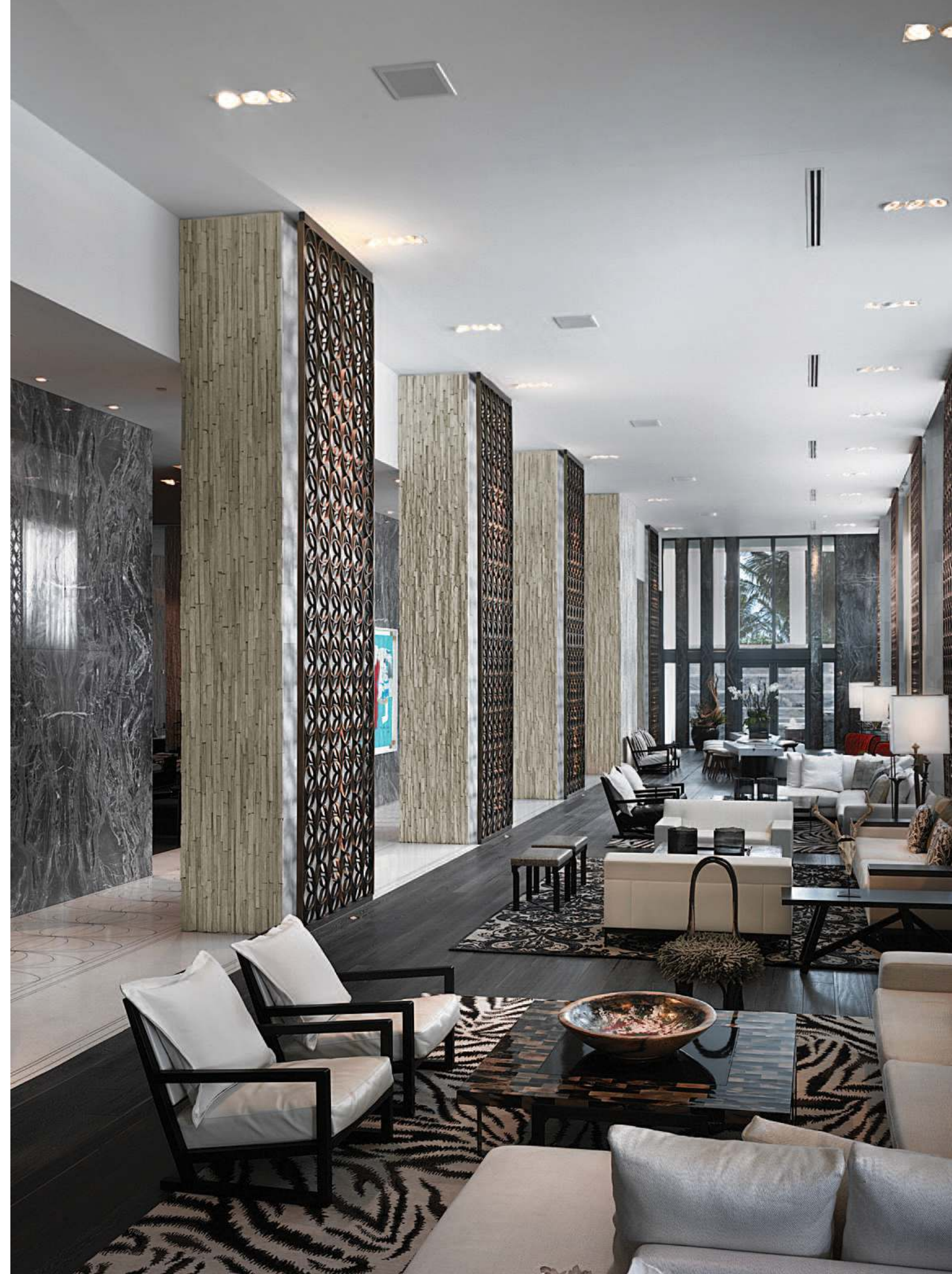


“Something much grander
than a mere hip hotel”

- *latimesmagazine.com, Mayer Rus,*
December 4, 2009

Living Room

Photo: Jesse David Harris



“The next evolution
in hospitality...
across the globe”

- Haute Living, December 2009/January 2010

Living Room Terrace

Photo: Jesse David Harris



“MR CHOW will be this
year’s Art Basel hot spot.”

- *Ocean Drive, July 2009*

MR CHOW®

Photo: Nikolas Koenig



“a night out at Soleà is
as fun as the food is
seriously good.”

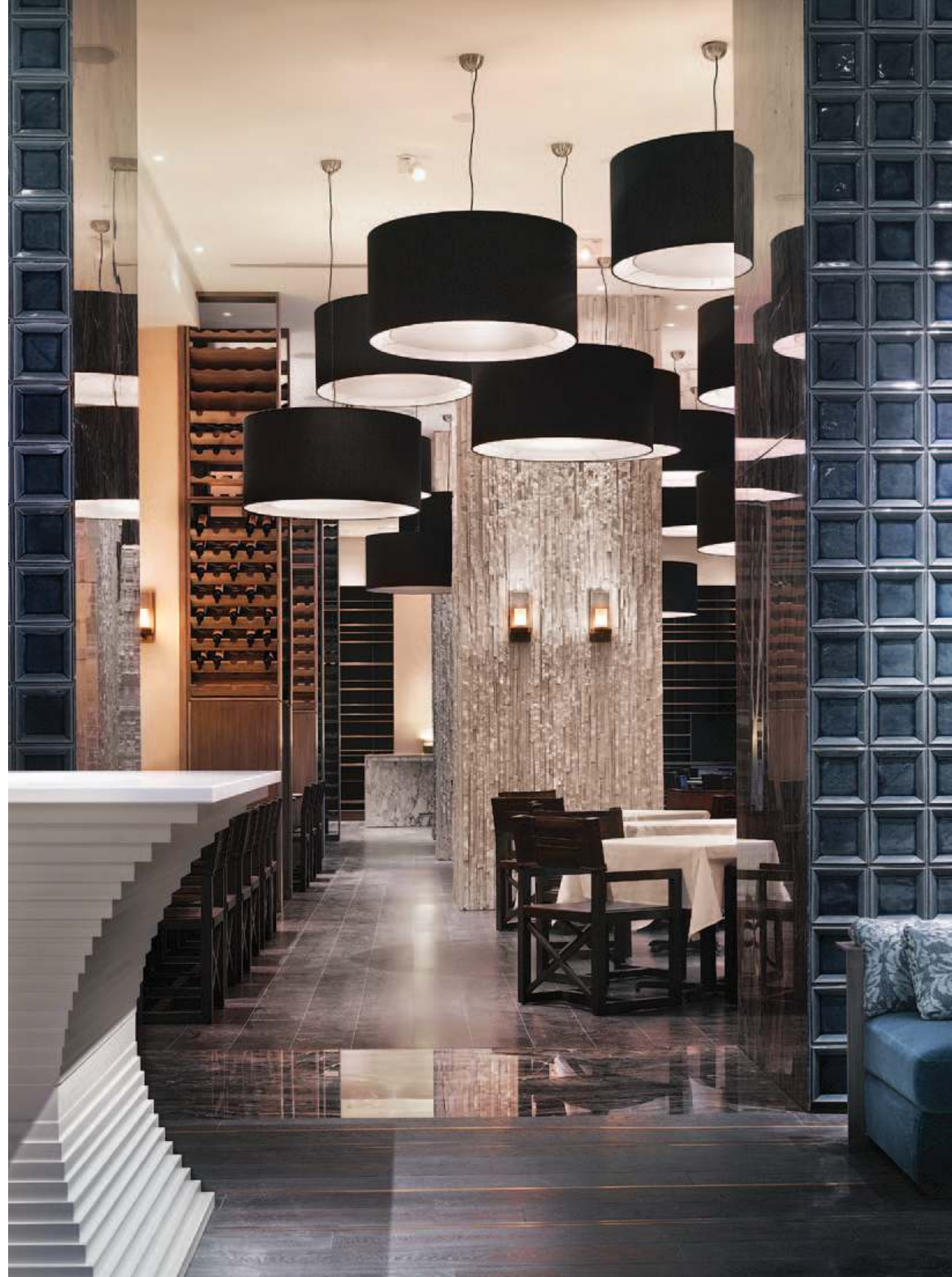
“purely Catalan, executed
with such care that virtually
everything is worth trying”

“ ★ ★ ★ ★ ”

- *Miami Herald, January 21, 2010*

Soleà

Photo: Nikolas Koenig



“The lushest pool
experience in Miami”

- *Elle*, July 2009

WET



“whimsical outdoor
rooms of sea grape,
saw palmetto and
pitch apple trees hung
with birdcages and
fragments of poetry”

- *The New York Times*, June 11, 2009

Photo: Jesse David Harris

Grove

Outdoor enchantment created by conceptual landscape artist
Paula Hayes in collaboration with Anna Busta

“it doesn’t just nod to serious art and design, it actually delivers.”

- *latimesmagazine.com*, Mayer Rus, December 4, 2009

“The [Art Basel] nights seemed to belong to W South Beach, this year’s ground zero for VIP dinners and socials”

-*Ocean Drive*, February 2010

Living Room Bar

Photo: Jesse David Harris / Art: Christopher Wool, Untitled (Run dog eat dog), enamel on aluminum, 1990



“ultra-exclusive”
“the hue of promise,
the embrace of
privilege, the notion
of utter exclusivity”
-“944” magazine, August 2009

Wall

Photo: Jesse David Harris



“Should the compulsion to trim down or tone up prevail, the W South Beach’s two pools, tennis court, basketball courts, beachside yoga and signature Bliss spa are there to lend a helping hand.”

-Wallpaper, July 2009

Bliss® Spa
SWEAT® Fitness
Swing Tennis Court
Basketball Court



LIVE IT. OWN IT.

THE PLANS

1 BEDROOM, 1.5 BATH

INTERIOR	1151 SQ.FT.	106.9 SQ.M.
EXTERIOR	195 SQ.FT.	18.1 SQ.M.
TOTAL	1346 SQ.FT.	125.0 SQ.M.

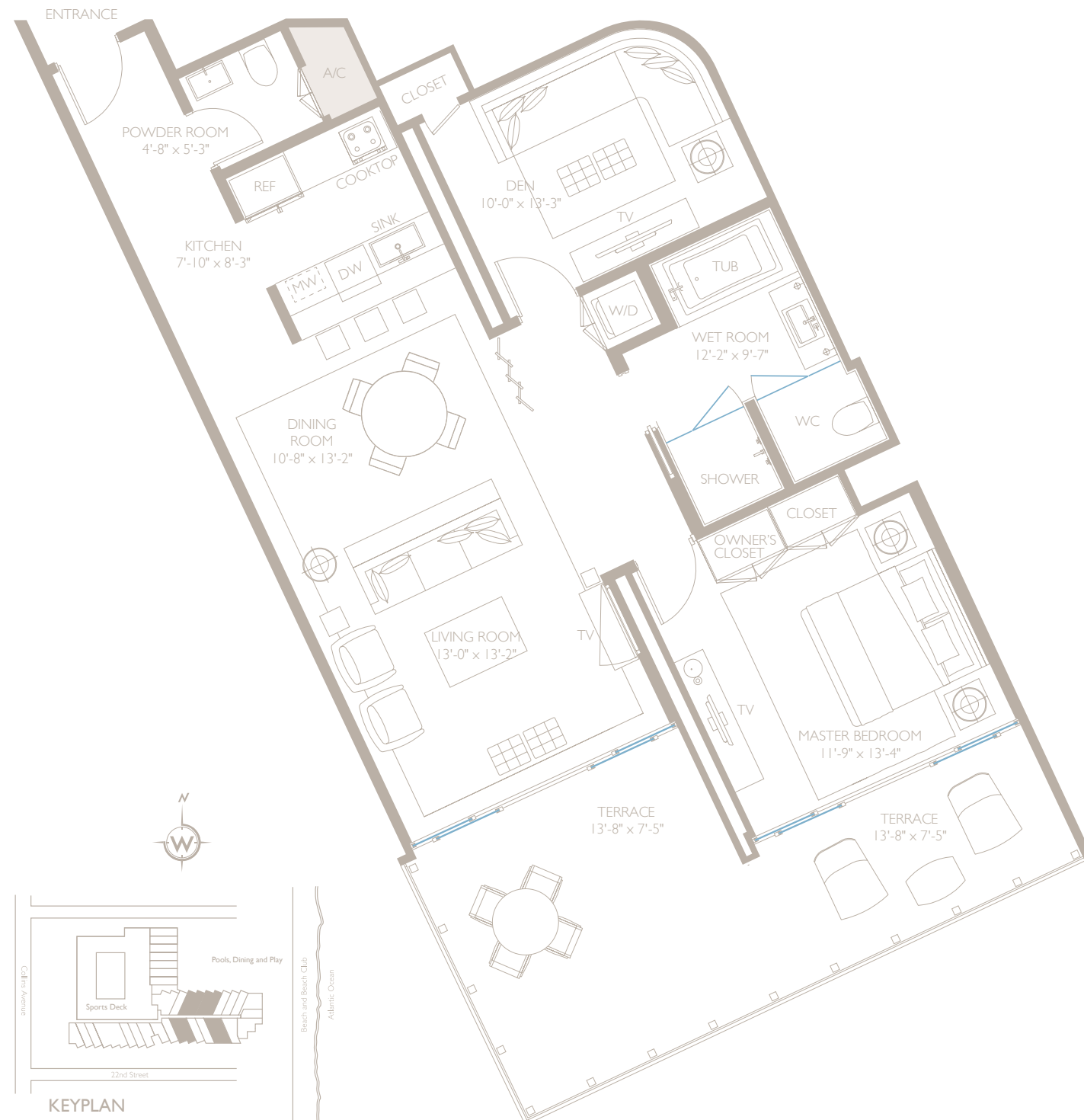


Photo: Jason Okutake



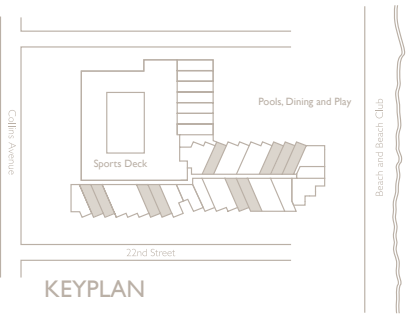
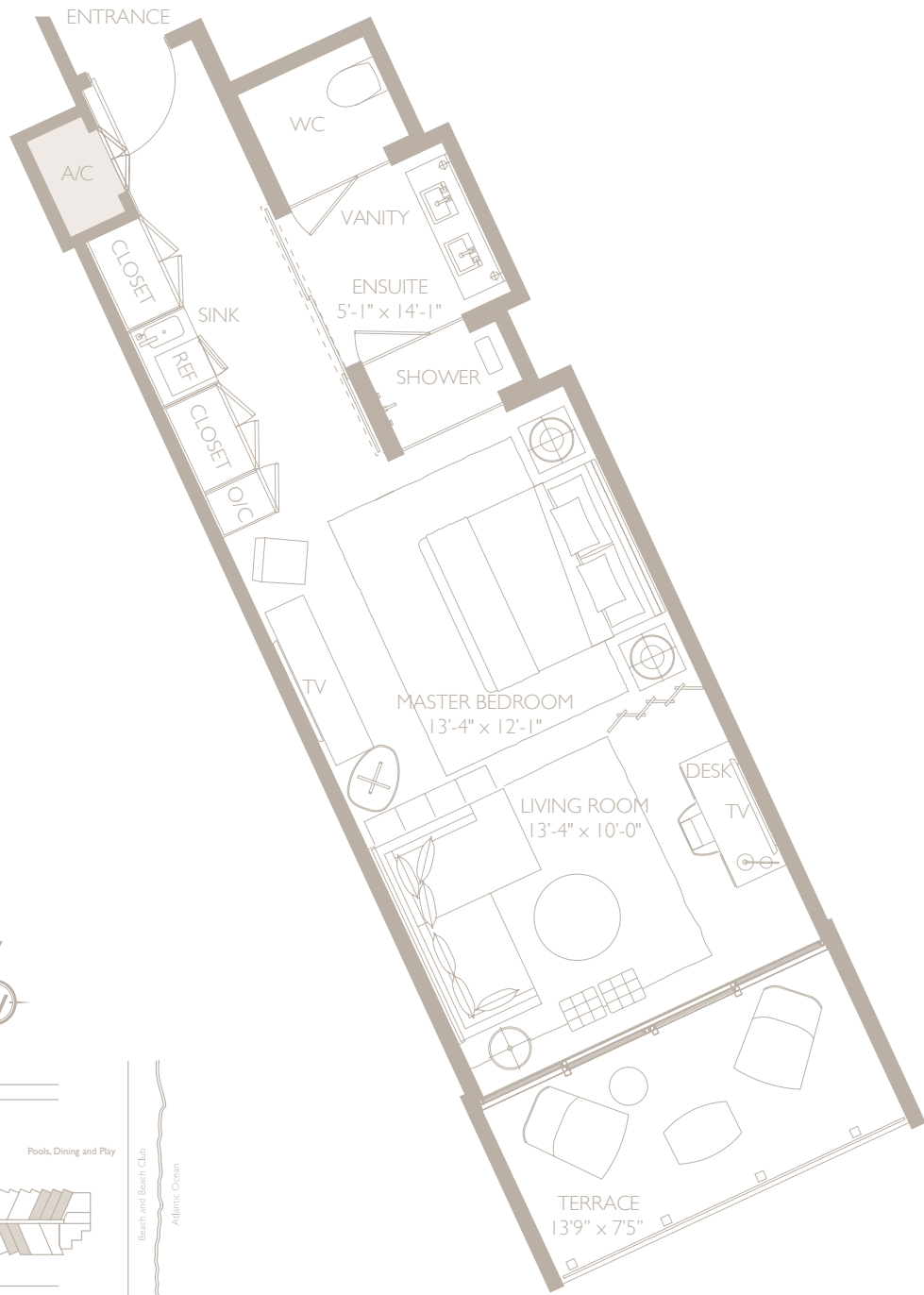
Photo: Jason Okutake

THE PLANS

OCEAN SUITE F

1 BEDROOM, 1 BATH

INTERIOR	574 SQ.FT.	53.3 SQ.M.
EXTERIOR	109 SQ.FT.	10.1 SQ.M.
TOTAL	683 SQ.FT.	63.4 SQ.M.



Stated dimensions are measured to the exterior boundaries of the exterior walls and the centerline of interior demising walls and in fact vary from the dimensions that would be determined by using the description and definition of the "Unit" set forth in the Declaration (which generally only includes the interior airspace between the perimeter walls and excludes interior structural components). Additionally, measurements of rooms set forth on any floor plan are generally taken at the greatest points of each given room (as if the room were a perfect rectangle), without regard for any cutouts. Accordingly, the area of the actual room will typically be smaller than the product obtained by multiplying the stated length times width. All dimensions are approximate.



Photo: Jason Okutake



Photo: Jason Okutake

THE RESIDENCES AT W SOUTH BEACH

The ultimate oceanfront condominium ownership opportunity in one of the world's most vibrant cultural and entertainment districts, The Residences at W South Beach provides privileged owners with access to every conceivable resort living luxury:

- 300 feet of wide, white sand Atlantic beachfront
- museum-quality art collection curated by Richard Marshall with works by Jean-Michel Basquiat, John Chamberlain, George Condo, Keith Haring, Damien Hirst, Richard Prince, Tom Sachs, Kenny Scharf, Richard Serra, Christopher Wool and Andy Warhol
- sleek, rich contemporary public spaces by Anna Busta/Studio B Design
- residence interiors by Yabu Pushelberg
- a glamorous pool set in Grove, a lyrical garden created in collaboration between famed conceptual landscape artist Paula Hayes and Anna Busta
- culinary delights from both international hotspot MR CHOW® and insider favorite Soleà
- 7,000-plus square foot Bliss® Spa, Sweat® fitness, Swing tennis court, and basketball court
- sultry nightlife in the swank Wall ultra-lounge
- seamless Whatever/Whenever® signature service
- exclusive W Residences owner benefits program



Photo: Nikolas Koenig

W
SOUTH BEACH
THE RESIDENCES



SOUTH BEACH

THE RESIDENCES

🏠 A 2201 Collins FEE LLC project. The Residences at W South Beach are not owned, developed or sold by Starwood Hotels & Resorts Worldwide, Inc. or their affiliates. 2201 Collins FEE LLC uses the W® trademarks and trade names under a license from Starwood Hotels & Resorts Worldwide, Inc. This is not an offer to sell or solicitation of offers to buy, nor is any offer or solicitation made where prohibited by law. The statements set forth herein are summary in nature and should not be relied upon. A prospective purchaser should refer to the entire set of documents provided by 2201 Collins FEE LLC and should seek competent legal advice in connection therewith.